

IMAGE 1

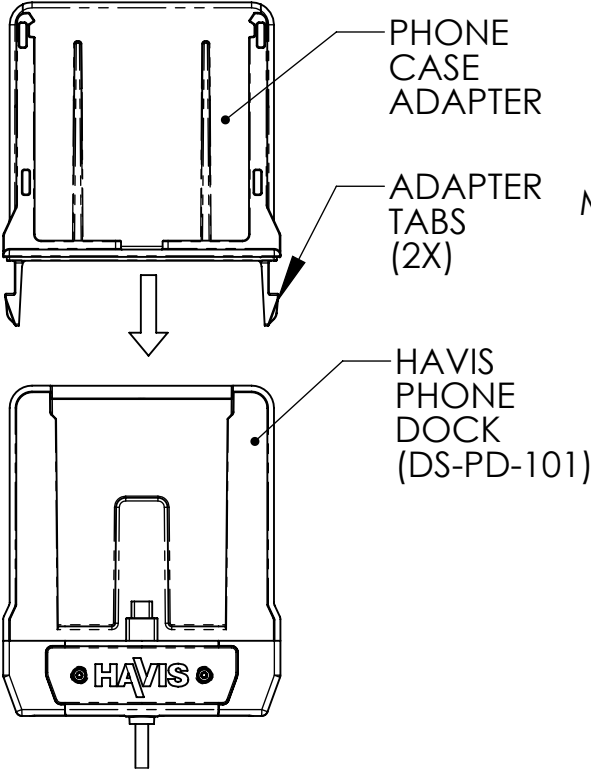


IMAGE 3

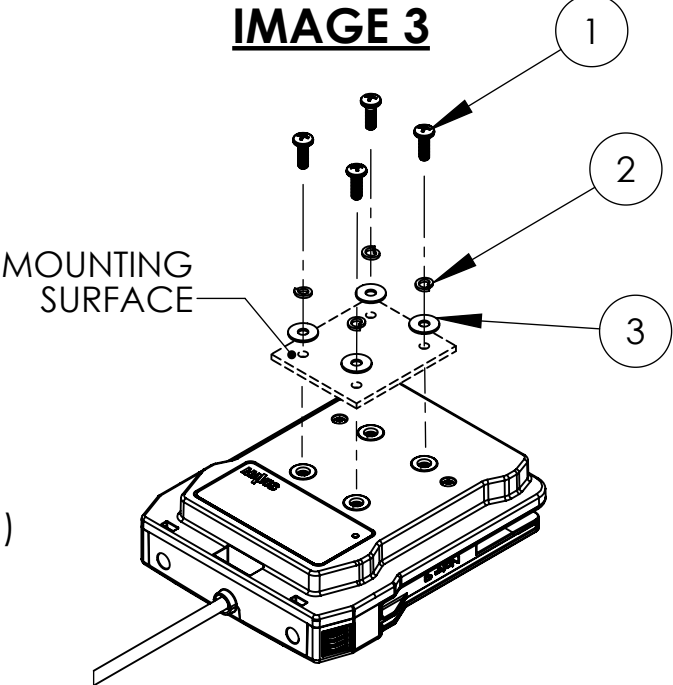
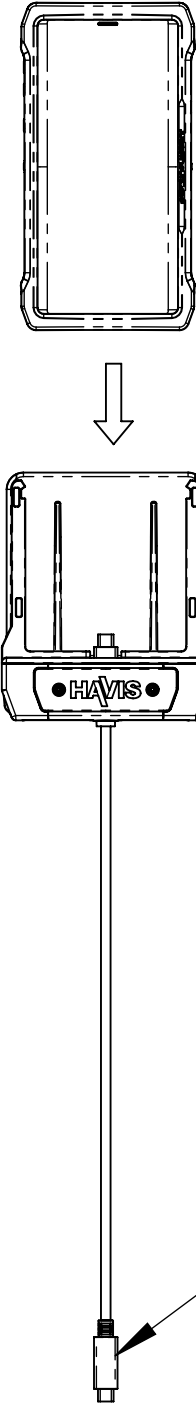


IMAGE 4

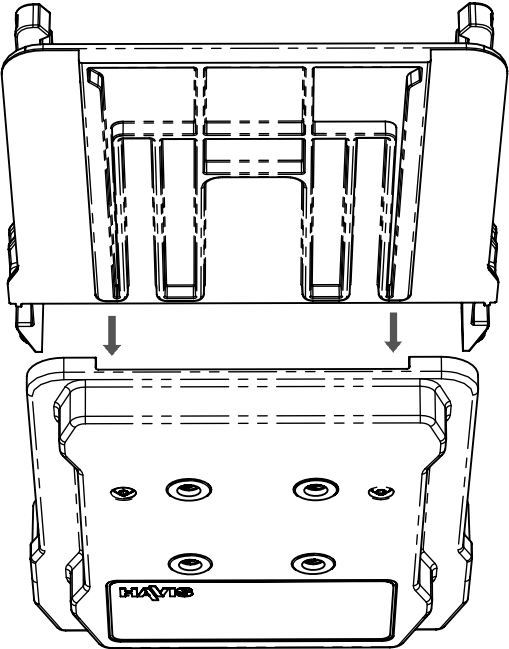


INSTALLATION INSTRUCTIONS:

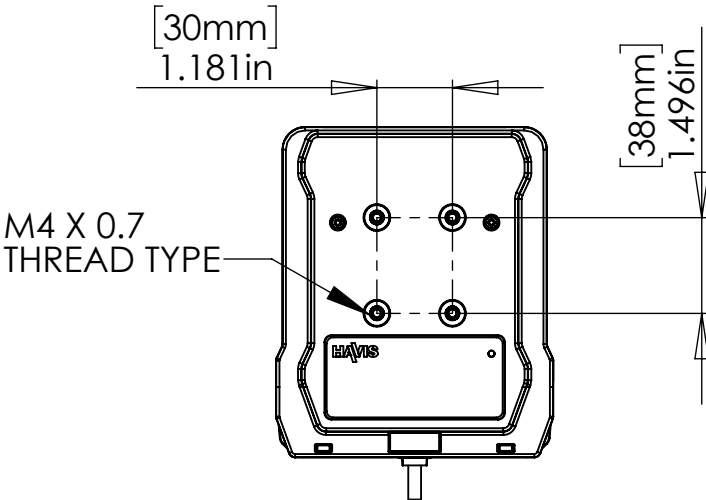
1. **CAUTION: VERIFY YOUR PHONE CASE AND ADAPTER ARE A MATCHING SET. IF YOU ATTEMPT TO DOCK AN UNMATCHED SET, YOU MAY DAMAGE YOUR DEVICE, PHONE CASE, OR PHONE CASE ADAPTER!**
2. Insert the PHONE CASE ADAPTER into the HAVIS PHONE DOCK (DS-PD-101), by aligning the dovetail features on the Rear of the PHONE CASE ADAPTER, and the front of the HAVIS PHONE DOCK, see Image 2.
3. Ensure that the tabs on the PHONE CASE ADAPTER snap and lock into place.
3. Mount the PHONE DOCK onto your desired motion device or mounting surface (reference the AMPS Mounting Pattern shown), with four (4) of the M4 x 0.7 x 12mm long screws (item#1), four (4) lock washers (item #2), and four (4) flat washers (item #3).
4. Connect the USB-C Cable to your HAVIS TOUCH SCREEN DISPLAY, or your selected multi-media device (not included).
5. With the phone display facing outward, dock your phone with the matching phone case as shown in Image 4. Ensure that the phone is fully seated and connected to the USB-C Cable.

CAUTION: DO NOT ATTEMPT TO DOCK YOUR PHONE WITHOUT A MATCHING PHONE CASE OR YOU MAY DAMAGE YOUR DEVICE AND/OR PHONE DOCK. DO NOT ATTEMPT TO DOCK YOUR PHONE WITHOUT THE PHONE CASE ADAPTER INSTALLED OR DAMAGE TO THE USB-C CONNECTOR MAY OCCUR.

IMAGE 2



AMPS MOUNTING PATTERN



HARDWARE KIT CONTENTS

ITEM #	DESCRIPTION	QTY.	DRIVE STYLE/SIZE
1	MACHINE SCREW, PAN HEAD, M4 X 0.7 X 12mm LONG	5	#2 PHILLIPS
2	LOCK WASHER, M4, 7mm OD, 1.1mm MIN THK.	5	N/A
3	WASHER, M4, 0.9mm to 1.1mm THICK	5	N/A

PRODUCT DESCRIPTION

INSTALLATION INSTRUCTIONS,
DS-PD-101

PRODUCT I.D. DS-PD-101-INST	DATE 07-14-20
PRODUCT NAME DS-PD-101 INSTALLATION INSTRUCTIONS	
HAVIS 1-800-524-9900 WWW.HAVIS.COM	WEIGHT: (LBS)
	REV. DATE 07-20

DRAWING NUMBER:
DS-PD-101-INST_7-20

WARNING: ALL HAVIS INC. PRODUCTS ARE DESIGNED WITH SAFETY OF USE AND INSTALLATION IN MIND. HOWEVER, IT IS THE SOLE RESPONSIBILITY OF THE OWNER/OPERATOR OF A VEHICLE USING HAVIS INC. MOUNTING AND DOCKING EQUIPMENT, TO INSURE THAT THE EQUIPMENT IS INSTALLED SO THAT IT WILL NOT INTERFERE WITH VEHICLE OPERATION, INTERFERE WITH SAFETY DEVICES, OBSTRUCT VIEW OF DRIVING CONDITIONS, OR IN ANY WAY DEGRADE OCCUPANT SAFETY. IMPROPER INSTALLATION CAN CAUSE SERIOUS INJURY IN THE EVENT OF AN ACCIDENT. INSTALLATION SHOULD ONLY BE PERFORMED BY QUALIFIED PROFESSIONALS. COMPUTERS AND MOTION DEVICES MUST BE MOVED TO AND STOWED/SECURED IN THEIR SAFE DRIVING POSITIONS BEFORE OPERATING VEHICLE.

PHONE CASE ADAPTER REMOVAL INSTRUCTIONS:

1. To remove the PHONE CASE ADAPTER, first remove your PHONE from the Dock, then fully depress the TABS on both sides of the PHONE CASE ADAPTER as shown in Image 1.
2. With the TABS fully depressed, apply pressure in direction shown in Image 2 to remove the PHONE CASE ADAPTER from the PHONE DOCK.

CAUTION: REPLACE PHONE CASE ADAPTER BEFORE ATTEMPTING TO DOCK YOUR PHONE IN THE DS-PD-101 OR DAMAGE TO THE USB-C CONNECTOR MAY OCCUR.

REPLACING THE USB-C CABLE (DS-DA-331):

1. To replace a damaged USB-C CABLE, first remove the PHONE CASE ADAPTER following the steps above.
2. Remove the two (2) M2.5 x 8mm screws shown in Image 3 with a T8 Torx bit, then remove the CABLE COVER.
3. Remove and discard the damaged USB-C CABLE.
4. Align the notches on the new USB-C CABLE (DS-DA-331) with the notches on the PHONE DOCK as shown in Image 4, Details B and C. The notches on the USB-C Cable and the PHONE DOCK must align for proper installation of the USB-C cable. Failure to align the notches may result in damage to the cable. or device.
5. Replace the CABLE COVER to secure the new USB-C cable in place. USE A SCREW DRIVER to reinstall the two (2) M2.5 X 8mm screws, then torque the screws to 4 in-lbs +/- 10%. Do not overtighten screws.

IMAGE 1

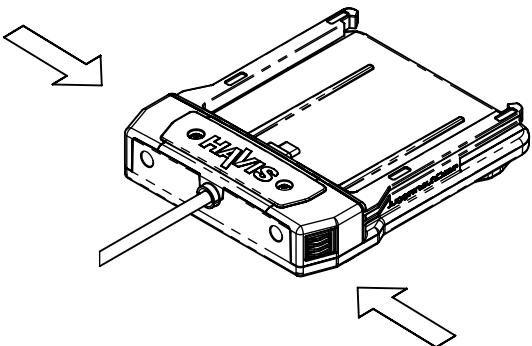


IMAGE 2

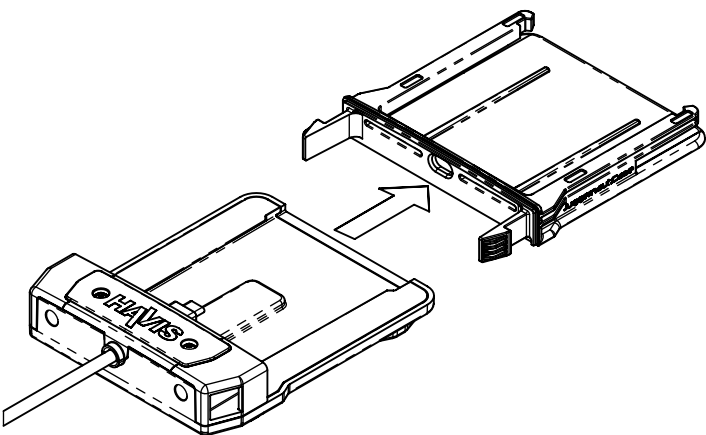
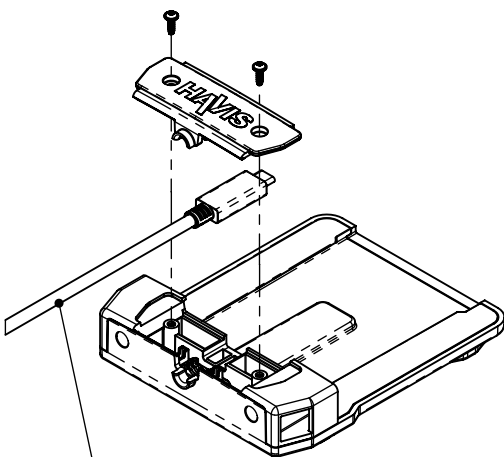
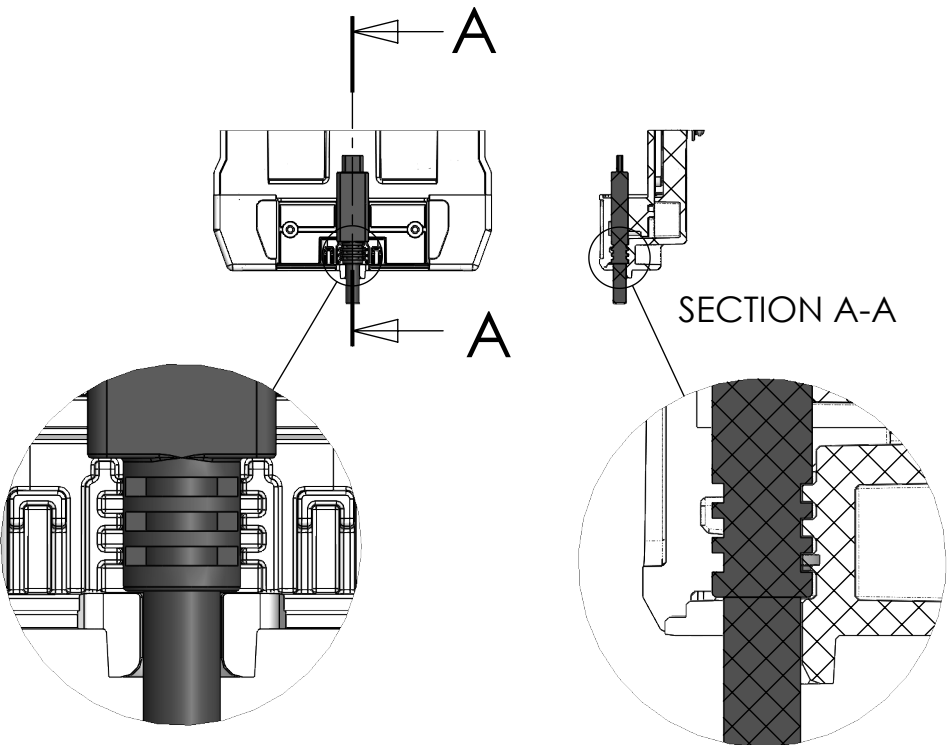


IMAGE 3



USB-C CABLE
HAVIS REPLACEMENT
PART NUMBER: DS-DA-331

IMAGE 4



DETAIL B
SCALE 2 : 1

DETAIL C
SCALE 2 : 1

DRAWING NUMBER:
DS-PD-101-INST_7-20

WARNING: ALL HAVIS INC. PRODUCTS ARE DESIGNED WITH SAFETY OF USE AND INSTALLATION IN MIND. HOWEVER, IT IS THE SOLE RESPONSIBILITY OF THE OWNER/OPERATOR OF A VEHICLE USING HAVIS INC. MOUNTING AND DOCKING EQUIPMENT, TO INSURE THAT THE EQUIPMENT IS INSTALLED SO THAT IT WILL NOT INTERFERE WITH VEHICLE OPERATION, INTERFERE WITH SAFETY DEVICES, OBSTRUCT VIEW OF DRIVING CONDITIONS, OR IN ANY WAY DEGRADE OCCUPANT SAFETY. IMPROPER INSTALLATION CAN CAUSE SERIOUS INJURY IN THE EVENT OF AN ACCIDENT. INSTALLATION SHOULD ONLY BE PERFORMED BY QUALIFIED PROFESSIONALS. COMPUTERS AND MOTION DEVICES MUST BE MOVED TO AND STOWED/SECURED IN THEIR SAFE DRIVING POSITIONS BEFORE OPERATING VEHICLE.

PRODUCT DESCRIPTION
INSTALLATION INSTRUCTIONS,
DS-PD-101

PRODUCT I.D. DS-PD-101-INST	DATE 07-14-20
PRODUCT NAME DS-PD-101 INSTALLATION INSTRUCTIONS	
HAVIS 1-800-524-9900 WWW.HAVIS.COM	WEIGHT: (LBS)
	REV. DATE 07-20