

INSTALLATION INSTRUCTIONS:

1. PLACE THE LPS-102 ON THE INDICATED SURFACE OF THE DOCKING STATION AND LINE UP THE HOLES WITH THE SLOTS ON THE SUPPLY, AS SHOWN. THE LPS-102 MAY BE INSTALLED ON EITHER SIDE OF TRAY.
2. INSTALL THE 4X #6-32 X 1-1/4" THREAD FORMING SCREWS (ITEM # 2) AND FLAT WASHERS (ITEM # 3) THROUGH THE SLOTS OF THE POWER SUPPLY INTO THE HOLES ON THE BOTTOM OF THE DOCKING STATION, AS SHOWN, TORQUE TO 8 +10% IN-LBS. NOTE: HARDWARE KIT ITEMS # 1 & # 4 ARE NOT REQUIRED FOR UT-100 SERIES INSTALLATION.
3. ROUTE CABLES WITH ADEQUATE SERVICE LOOP TO ALLOW FREE MOTION OF THE DOCK AND SECURELY STRAIN RELIEVE CABLES MAKING SURE THEY ARE CLEAR OF ALL MOTION DEVICES AND PINCH POINTS. SEE UT-100 SERIES INSTALLATION SHEET FOR TIE WRAP AND WIRE ROUTING DIRECTIONS.
4. INSERT POWER SUPPLY OUTPUT CABLE CONNECTOR INTO LAPTOP POWER RECEPTACLE AND SECURE USING ZIP TIES INCLUDED WITH THE UT-100 SERIES.
5. FULLY INSERT INPUT CABLE 12VDC POWER PLUG INTO VEHICLE CIGARETTE LIGHTER SOCKET. SEE POWER SUPPLY INSTALLATION INSTRUCTIONS FOR MORE DETAILS.
6. INPUT CABLE MAY BE HARD-WIRED TO THE VEHICLE'S ELECTRICAL SYSTEM BY CUTTING OFF THE SUPPLIED INPUT CABLE CIGARETTE LIGHTER 12VDC POWER PLUG AND CONNECTING THE BLACK WIRE TO VEHICLE GROUND AND THE RED (OR WHITE) WIRE TO 12VDC. SEE POWER SUPPLY INSTALLATION INSTRUCTIONS FOR MORE DETAILS.

HARDWARE KIT CONTENTS:

| ITEM # | ITEM  | FINISH     | QTY |
|--------|---|------------|-----|
| 1      | MACHINE SCREW, PAN HEAD, #6-32 X 1-1/4"                                   | STAINLESS  | 4   |
| 2      | SELF-TAPPING SCREW, #6-32 X 1-1/4" PAN HEAD, TAPTITE                      | BLACK      | 4   |
| 3      | WASHER, FLAT WASHER #6 SCREW SIZE, 9/64" ID, 3/8" OD, 0.024"-0.039" THICK | STAINLESS  | 4   |
| 4      | NUT, #6-32 NYLON INSERT, 5/16" W, 1 1/64" H                               | CLEAR ZINC | 4   |

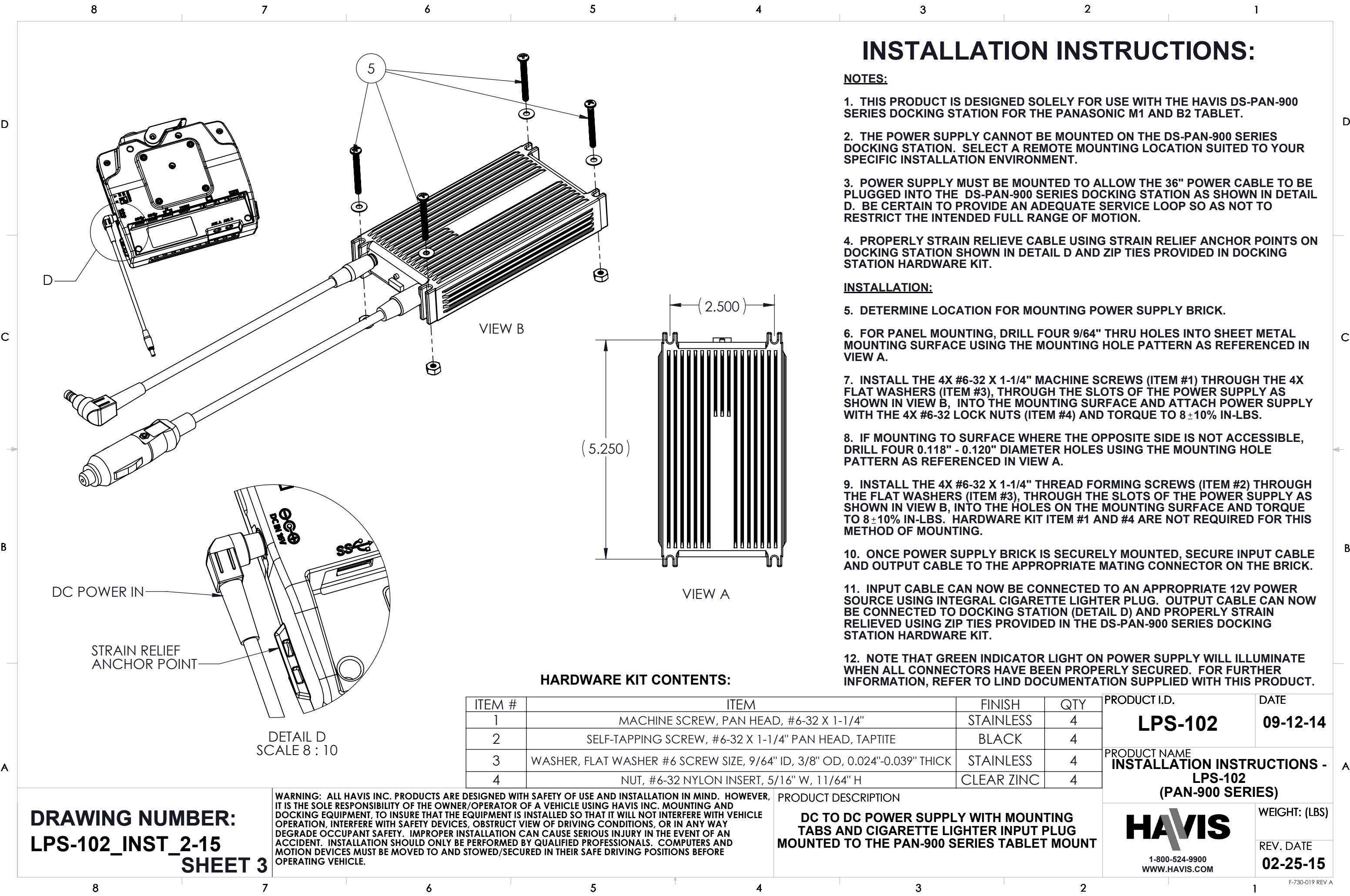
DRAWING NUMBER:  
LPS-102\_INST\_2-15  
SHEET 2

WARNING: ALL HAVIS INC. PRODUCTS ARE DESIGNED WITH SAFETY OF USE AND INSTALLATION IN MIND. HOWEVER, IT IS THE SOLE RESPONSIBILITY OF THE OWNER/OPERATOR OF A VEHICLE USING HAVIS INC. MOUNTING AND DOCKING EQUIPMENT, TO INSURE THAT THE EQUIPMENT IS INSTALLED SO THAT IT WILL NOT INTERFERE WITH VEHICLE OPERATION, INTERFERE WITH SAFETY DEVICES, OBSTRUCT VIEW OF DRIVING CONDITIONS, OR IN ANY WAY DEGRADE OCCUPANT SAFETY. IMPROPER INSTALLATION CAN CAUSE SERIOUS INJURY IN THE EVENT OF AN ACCIDENT. INSTALLATION SHOULD ONLY BE PERFORMED BY QUALIFIED PROFESSIONALS. COMPUTERS AND MOTION DEVICES MUST BE MOVED TO AND STOWED/SECURED IN THEIR SAFE DRIVING POSITIONS BEFORE OPERATING VEHICLE.

PRODUCT DESCRIPTION

DC TO DC POWER SUPPLY WITH MOUNTING TABS AND CIGARETTE LIGHTER INPUT PLUG MOUNTED TO THE UT-100 SERIES LAPTOP MOUNT

|  |                              |
|--|------------------------------|
| PRODUCT I.D.<br><b>LPS-102</b>   | DATE<br><b>09-18-12</b>      |
| PRODUCT NAME<br><b>INSTALLATION INSTRUCTIONS - LPS-102 (UT-100 SERIES)</b> |                              |
| <b>HAVIS</b><br>1-800-524-9900<br>WWW.HAVIS.COM                            | WEIGHT: (LBS)                |
|  | REV. DATE<br><b>02-25-15</b> |



# INSTALLATION INSTRUCTIONS:

## NOTES:

1. THIS PRODUCT IS DESIGNED SOLELY FOR USE WITH THE HAVIS DS-PAN-900 SERIES DOCKING STATION FOR THE PANASONIC M1 AND B2 TABLET.
2. THE POWER SUPPLY CANNOT BE MOUNTED ON THE DS-PAN-900 SERIES DOCKING STATION. SELECT A REMOTE MOUNTING LOCATION SUITED TO YOUR SPECIFIC INSTALLATION ENVIRONMENT.
3. POWER SUPPLY MUST BE MOUNTED TO ALLOW THE 36" POWER CABLE TO BE PLUGGED INTO THE DS-PAN-900 SERIES DOCKING STATION AS SHOWN IN DETAIL D. BE CERTAIN TO PROVIDE AN ADEQUATE SERVICE LOOP SO AS NOT TO RESTRICT THE INTENDED FULL RANGE OF MOTION.
4. PROPERLY STRAIN RELIEVE CABLE USING STRAIN RELIEF ANCHOR POINTS ON DOCKING STATION SHOWN IN DETAIL D AND ZIP TIES PROVIDED IN DOCKING STATION HARDWARE KIT.

## INSTALLATION:

5. DETERMINE LOCATION FOR MOUNTING POWER SUPPLY BRICK.
6. FOR PANEL MOUNTING, DRILL FOUR 9/64" THRU HOLES INTO SHEET METAL MOUNTING SURFACE USING THE MOUNTING HOLE PATTERN AS REFERENCED IN VIEW A.
7. INSTALL THE 4X #6-32 X 1-1/4" MACHINE SCREWS (ITEM #1) THROUGH THE 4X FLAT WASHERS (ITEM #3), THROUGH THE SLOTS OF THE POWER SUPPLY AS SHOWN IN VIEW B, INTO THE MOUNTING SURFACE AND ATTACH POWER SUPPLY WITH THE 4X #6-32 LOCK NUTS (ITEM #4) AND TORQUE TO 8±10% IN-LBS.
8. IF MOUNTING TO SURFACE WHERE THE OPPOSITE SIDE IS NOT ACCESSIBLE, DRILL FOUR 0.118" - 0.120" DIAMETER HOLES USING THE MOUNTING HOLE PATTERN AS REFERENCED IN VIEW A.
9. INSTALL THE 4X #6-32 X 1-1/4" THREAD FORMING SCREWS (ITEM #2) THROUGH THE FLAT WASHERS (ITEM #3), THROUGH THE SLOTS OF THE POWER SUPPLY AS SHOWN IN VIEW B, INTO THE HOLES ON THE MOUNTING SURFACE AND TORQUE TO 8±10% IN-LBS. HARDWARE KIT ITEM #1 AND #4 ARE NOT REQUIRED FOR THIS METHOD OF MOUNTING.
10. ONCE POWER SUPPLY BRICK IS SECURELY MOUNTED, SECURE INPUT CABLE AND OUTPUT CABLE TO THE APPROPRIATE MATING CONNECTOR ON THE BRICK.
11. INPUT CABLE CAN NOW BE CONNECTED TO AN APPROPRIATE 12V POWER SOURCE USING INTEGRAL CIGARETTE LIGHTER PLUG. OUTPUT CABLE CAN NOW BE CONNECTED TO DOCKING STATION (DETAIL D) AND PROPERLY STRAIN RELIEVED USING ZIP TIES PROVIDED IN THE DS-PAN-900 SERIES DOCKING STATION HARDWARE KIT.
12. NOTE THAT GREEN INDICATOR LIGHT ON POWER SUPPLY WILL ILLUMINATE WHEN ALL CONNECTORS HAVE BEEN PROPERLY SECURED. FOR FURTHER INFORMATION, REFER TO LIND DOCUMENTATION SUPPLIED WITH THIS PRODUCT.

## HARDWARE KIT CONTENTS:

| ITEM # | ITEM  | FINISH     | QTY |
|--------|---|------------|-----|
| 1      | MACHINE SCREW, PAN HEAD, #6-32 X 1-1/4"                                   | STAINLESS  | 4   |
| 2      | SELF-TAPPING SCREW, #6-32 X 1-1/4" PAN HEAD, TAPTITE                      | BLACK      | 4   |
| 3      | WASHER, FLAT WASHER #6 SCREW SIZE, 9/64" ID, 3/8" OD, 0.024"-0.039" THICK | STAINLESS  | 4   |
| 4      | NUT, #6-32 NYLON INSERT, 5/16" W, 11/64" H                                | CLEAR ZINC | 4   |

|                |                 |
|----------------|-----------------|
| PRODUCT I.D.   | DATE            |
| <b>LPS-102</b> | <b>09-12-14</b> |

|   |
|---|
| PRODUCT NAME  |
| <b>INSTALLATION INSTRUCTIONS - LPS-102 (PAN-900 SERIES)</b> |

|   |   |
|---|---|
| <b>HAVIS</b><br>1-800-524-9900<br>WWW.HAVIS.COM | WEIGHT: (LBS)<br>REV. DATE<br><b>02-25-15</b> |
|---|---|

**DRAWING NUMBER:**  
**LPS-102\_INST\_2-15**  
**SHEET 3**

**WARNING:** ALL HAVIS INC. PRODUCTS ARE DESIGNED WITH SAFETY OF USE AND INSTALLATION IN MIND. HOWEVER, IT IS THE SOLE RESPONSIBILITY OF THE OWNER/OPERATOR OF A VEHICLE USING HAVIS INC. MOUNTING AND DOCKING EQUIPMENT, TO INSURE THAT THE EQUIPMENT IS INSTALLED SO THAT IT WILL NOT INTERFERE WITH VEHICLE OPERATION, INTERFERE WITH SAFETY DEVICES, OBSTRUCT VIEW OF DRIVING CONDITIONS, OR IN ANY WAY DEGRADE OCCUPANT SAFETY. IMPROPER INSTALLATION CAN CAUSE SERIOUS INJURY IN THE EVENT OF AN ACCIDENT. INSTALLATION SHOULD ONLY BE PERFORMED BY QUALIFIED PROFESSIONALS. COMPUTERS AND MOTION DEVICES MUST BE MOVED TO AND STOWED/SECURED IN THEIR SAFE DRIVING POSITIONS BEFORE OPERATING VEHICLE.

**PRODUCT DESCRIPTION**  
**DC TO DC POWER SUPPLY WITH MOUNTING TABS AND CIGARETTE LIGHTER INPUT PLUG MOUNTED TO THE PAN-900 SERIES TABLET MOUNT**